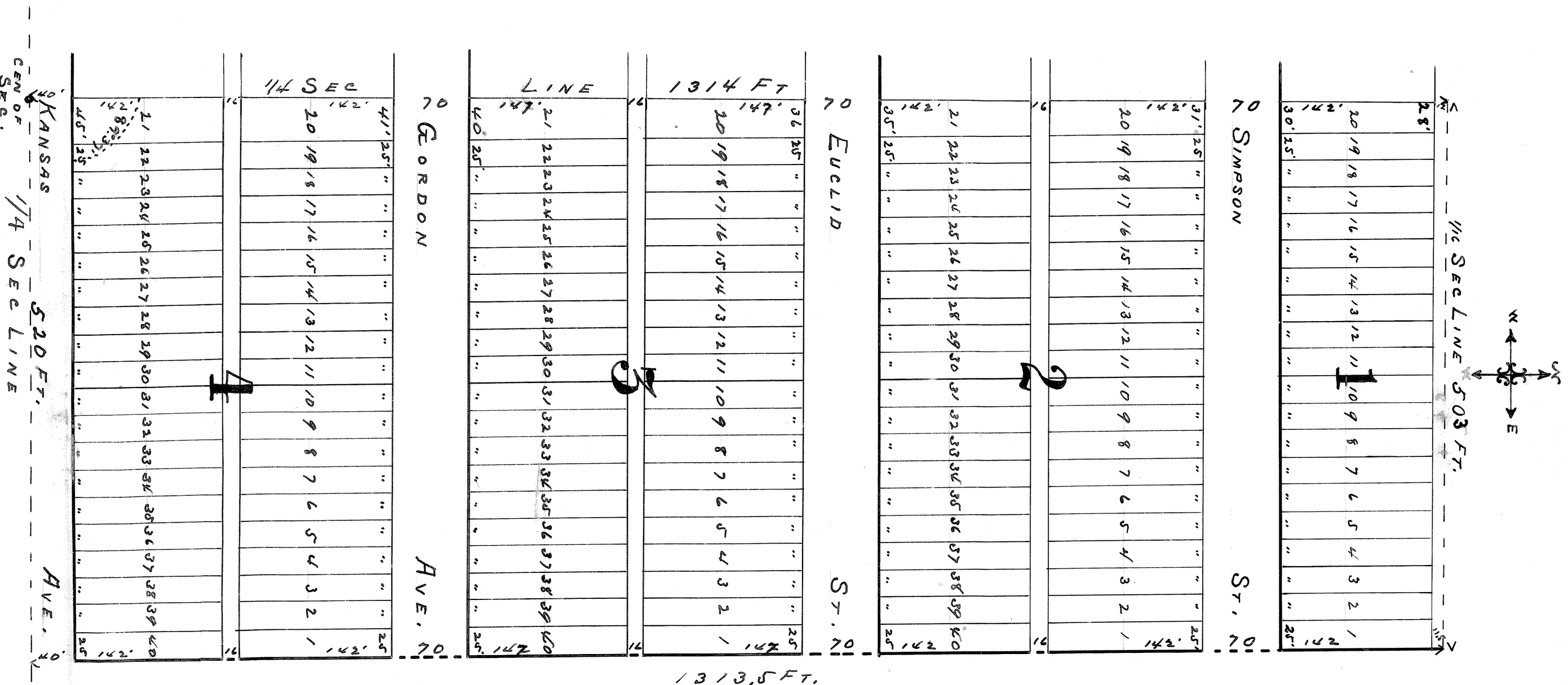


East College Addition,

McPHERSON KANSAS.



10⁰⁰ Day
 Not. F. B. Bate
 Register of Deeds

East College Addition to the City of McPherson Kansas is situated in the S.W. 1/4 of the N.E. 1/4 of Sec 27 R. 19 Range 3 west of the 6th P.M. and is more fully described as follows to wit: Beginning at the center of Sec 27, 1/4 R. 19 Range 3 west of the 6th P.M. thence running east on 1/4 Sec line 520 feet. thence north on 1/4 Sec line to the 1/4 Sec line. thence west on the 1/4 Sec line 503 feet to the 1/4 Sec line. thence south on the 1/4 Sec line 1314 feet to the place of beginning containing 15 acs more or less. thence along a line west of land so divisible into 30 lots, lots, blocks, alleys and avenues, the size and extent of which is shown by figures, in the above plat, which is a true and correct and conforming plat, in the above plat, which is a true and correct copy of July 1888.

S. D. Bate. C.S.

Be it remembered that the McPherson College Building Association, duly incorporated under the laws of the State of Kansas, is the present owner of the land upon which East College Addition is the City of McPherson Kansas is situated, and in the undersigned officers of said Association have caused the above described land to be platted and plotted as shown by the above plat. The same being in accordance with my design and instruction. The Sheriff, Deputy Sheriff and Clerks as shown in the above plat are hereby designated as and for the use of the Public.

In witness whereof I and the undersigned College Building Association has caused this instrument to be signed by its President and attested by its Secretary and its corporate seal to be attested this 10th day of August, A.D. 1888.

Signed
 A. Bate
 Secretary

W. B. Bate President

State of Kansas }
 County of McPherson } S. S. Be it remembered on this 10 day of August A. D. 1888. before me the undersigned a Notary Public, in and for the County and State aforesaid, came ~~the same persons~~ J. B. Webster and A. Bate, who are known to me to be the same persons who executed the foregoing instrument writing, and each persons duly acknowledged the same to be their act and deed. In testimony whereof I have hereunto set my hand and affixed my official seal on the day and year last above written.

My Commission Expires July 9, 1892. J. M. W. Notary Public